

2007 - 2008



ANNUAL REPORT

Central Highlands Regional Resources Use Planning Cooperative



Table of Contents

Introduction	1
From The Chair	2
Director's Report	3
Executive Officer Report	5
Highlights of the 2007/08 Year	6
Sector Reports	7
Human Services Sector	7
Food & Fibre Sector	7
Mining Sector	8
Conservation Sector	9
Pastoral Sector	9
Cultural Heritage Sector	10
Integrated Catchment Management Sector	10
Grains Sector	11
Local Government Sector	11
Economic Development Sector	12
Landcare Sector	12
Higher Education Sector	12
Representative Reports	13
Fitzroy Basin Association	13
Burdekin Dry Tropics NRM	13
Environmental Protection Agency	14
Department of Natural Resources & Water	15
Department of Primary Industries and Fisheries	15
Central Highlands Natural Resource Management Group (Observer)	16





Introduction

CHRRUP In The Central Highlands

CHRRUP (Central Highlands Regional Resources Use Planning Cooperative) aims to improve the sustainability of natural resource use and management in the Central Highlands by encouraging greater coordination, improved planning and stronger partnerships between industry and community groups.

CHRRUP works closely with the major stakeholders of natural resources in the Central Highlands, who have an interest in sustainable agricultural practices. This is done by:

“Proactively working together with our regional assets to achieve natural resource management outcomes that support the sustainability of the community and Central Highlands region”

The CHRRUP Regional Consultative Committee and Board are represented by 13 sectors from the community:

- Conservation
- Economic Development
- Food & Fibre (Irrigation)
- Grains
- Higher Education
- Human Services
- Indigenous
- Integrated Catchment Management
- Landcare
- Local Government
- Mining
- Pastoral
- State Government Agencies

CHRRUP acts as a sub-regional group contracted to carry out NRM activities for the Fitzroy Basin Association in the Comet and Nogoia Catchments, and for the Burdekin Dry Tropics in the Belyando-Suttor River Catchments. Projects have previously been funded through NAPSWQ and NHT, and will continue to receive funding under the Caring For Our Country budget allocation.



CHRRUP Partners:



From The Chair



GAIL GODWIN-SMITH

Chairperson
(CHRRUP)

It is with mixed emotions that I put together what will be my last contribution to the CHRRUP Annual Report as Chair. I feel pleased to be leaving at such time where CHRRUP's reputation as a leading provider of community NRM in the Central Highlands has been consolidated, yet I know I will miss the work with the community and key stakeholders, along with the personal friendships made along the way. During my involvement with CHRRUP over the last 5 ½ years, I have seen many changes and watched the organisation continue to grow with the support of the board and staff. We have been able to build key funding partnerships particularly with the Fitzroy Basin Association and in recent years with the Burdekin Dry Tropics.

The 07/08 Financial Year has been a time to look to the future again. With a change of government it has meant a change to how we as an organisation will be funded in the future. This change has brought about a degree of uncertainty. At this stage we are continuing to work closely with our key funding partners FBA & BDT to ensure a smooth transition into the new "Caring For Our Country" program.

This year has seen CHRRUP focus on winding up the Natural Heritage Trust 2 and National Action Plan for Salinity & Water Quality (NAPSWQ) funding which was administered through our partners FBA & BDT. Since 2004, we have been able to invest significant amounts of money into the Central Highlands as part of an incentive scheme to help achieve targeted outcomes across a range of Natural Resource Management initiatives. This has been highly successful, and this year we have had an opportunity to revisit and finalise those projects funded under this program. We have used this period to re-engage the community and industry stakeholders through a range of activities which have had a focus on education and awareness.

These activities have included the development of the Grains "Best Management Practices" Module which is a significant project being piloted and supported by our staff in the Central Highlands. We have developed two wetland protection projects in the Consuelo Creek and Lake Nugga Nugga areas through funding available under the *Great Barrier Reef Coastal Wetlands Protection Program*. In addition to these activities, we have been able to source funds through the *National Landcare Program* to upgrade the Comet Weather Stations to the "G" Network. Ensham Resources Mine & Rio Tinto Coal Australia have also assisted us with the sponsorship of signage at the new Emerald washdown facility.

I would like to sincerely thank the board for their ongoing commitment to CHRRUP over this 07/08 year. With the amalgamation of local councils to form the new Central Highlands Regional Council we have a new Local Government Director in Kerry Hayes who has replaced outgoing councilor Sharon Kirk. In the Conservation Sector, Sara Hanggi is our incoming Director replacing Pam Malyszek and our new Pastoral Sector Director is Paul Oates who replaces Trent Jeppeson. I would like to take this opportunity to sincerely thank Sharon, Trent and Pam for their valued contribution to CHRRUP and warmly welcome Kerry, Sara and Paul into the Director roles.

There have been no changes to CHRRUP staff over the last year, which in itself is quite significant and indicates a degree of stability and contentment within the workforce. I would like to congratulate all the staff on their continued dedication, enthusiasm and professional approach to their work. In July, Anna Cochrane will leave to follow new farming pursuits with her husband in NSW. Anna has been a wonderful addition to the CHRRUP team and her enthusiastic approach to work

has inspired us all. We sincerely thank Anna for her leadership, commitment and professionalism and wish her well for the future.

As CHRRUP continues to grow and evolve, so will those within the organisation. In June we welcomed Annette Smith into the role of Chair. Annette brings with her a range of experiences and knowledge which will be great assets in the role. I would like to sincerely thank the board, staff and community for all their support over the last 5 ½ years and wish CHRRUP all the very best for the future. It has been an absolute pleasure to have been part of this wonderful organisation.

Gail Godwin-Smith





Director's Report

CHRRUP Board

The CHRRUP Board is made up of a group of people who bring their knowledge of natural resource management to provide direction and assistance to the running of the organisation. Board meetings are an opportunity to share experiences and develop relationships across the many different sectors in the region.

Director Meetings

There were four Regional Consultative Committee (Board) meetings held for the financial year 2007-2008.

- 14 August 2007
CHRRUP Board Room
- 28 November 2007
Ensham Meeting Room,
Duckponds Road, Comet
- 12 February 2008
CHRRUP Board Room
- 17 June 2008
CHRRUP Board Room

Major Agenda Items

- Neighbourhood Catchment reprioritisation
- FBA – State and Federal Bi-lateral Funding updates & NC Evaluations
- Climate Change in the Cotton Industry
- Negotiation of contracts with Burdekin Dry Tropics
- Grains Best Management Practices Pilot Program
- CHRRUP Goal setting for organisational achievements
- New suite of public relations tools – brochures; website; factsheets; banner
- Financial Committee Updates at Board Meetings

Director Attendance

SECTOR	DIRECTOR	DATE OF APPOINTMENT	MEETINGS ATTENDED
Chair	Gail Godwin-Smith	03.02.03-27.06.08	4
Chair	Annette Smith	17.06.06	1
Pastoral	Trent Jeppesen	25.11.04-17.06.08	3
Pastoral	Paul Oates	17.06.08	1
Grains	Larry Daniels	14.03.06	3
Food & Fibre	Nigel Burnett	23.11.06	3
Local Govt	Sharon Kirk	17.02.05-03.03.08	3
Local Govt	Kerry Hayes	17.06.08	0
Landcare	Sandy Paton	17.11.05-28.11.07	0
Human Services	Linda Drake	08.11.02	2
Mining	Colin Moffat	28.06.07	3
Higher Education	Jim Sands	23.11.06	4
Integrated Catchment Management	Tom Nicholas	18.8.05	1
Conservation	Pam Malyszczek	28.11.07-11.02.08	1
Conservation	Sara Hanggi	17.6.08	1

Members

SECTOR	MEMBER	DATE OF APPOINTMENT	MEETINGS ATTENDED
Grains	Mark Donaldson	23.11.06-28.11.07	0
Grains	Frank Conway	28.11.07	0
Pastoral	Russell Purvis	25.11.04	2
Landcare	David Bridgeman	08.11.02	2
Local Govt	David Brimblecombe	19.02.05-03.03.08	1
Food & Fibre	Craig Barsby	29.05.07	2
Mining	Shane Flint	17.11.05	1
Higher Education	John Rolfe	08.11.02	0
Human Services	Sandy Paton		0



CHRRUP Representatives and Observers

SECTOR	NAME	POSITION	MEETINGS ATTENDED
	Anna Cochrane	CHRRUP Executive Officer	4
Indigenous	Lindsay Black	Representative	2
State Govt (EPA)	Julianna McCosker	Representative	4
State Govt (DNR&W)	George Bourne Karen Aitchenson	Representative Representative	0 1
State Govt (DPI&F)	Kevin McCosker Anne Shepherd	Representative Representative	2 1
Economic Development	Peter Dowling	Representative	2
Fitzroy Basin Assoc	Claire Rodgers	Observer	2
CHNRMG	Catrina Wolski	Observer	1
Human Services	Lorna Hicks	Observer	1

Principal Activities

CHRRUP aims to improve the sustainability of natural resource use and management in the Central Highlands by encouraging greater coordination, improved planning and stronger partnerships between industry and community groups.

CHRRUP acts as a sub-regional group contracted to carry out NRM activities for the Fitzroy Basin Association in the Comet and Nogoia Catchments, and for the Burdekin Dry Tropics in the Belyando-Suttor River Catchments. Projects have previously been funded through NAPSWQ and NHT, and will continue to receive funding under the Caring For Our Country budget allocation.

Operational Result

2007/2008 Financial Year resulted in a net profit of \$133,986. This result reflects the down time in field work as the NHT2 and NQPSWQ Programs concluded. This surplus will provide a safety net for CHRRUP as we work through the 'Caring For Our Country' transition year.

Please contact CHRRUP if you would like to receive a copy of the financial statements.

Review of Operations

Please refer to the Executive Officer Report.

Dividends and Member Distributions

There were no dividends or member distributions for the 2007/2008 Financial Year.

State of Affairs

Some changes in the state of affairs have impacted on the organisation during the financial year. The resignation of the Executive Officer and the Chair towards the end of the financial year were the main changes to staff. The contract with the Burdekin Dry Tropics has been extended until December 2008, which will result in the continued employment of a field officer.

The majority of 2006/07 projects with FBA and BDT have either been completed, closed or under a Deed of Variation. Completion is expected prior to the end of financial year 2008/09.

Following the recent local council amalgamations, CHRRUP continues to work closely with representatives of the shires on joint projects, such as strategic weed control. Although Shire boundaries have changed, CHRRUP will continue to work in the Nogoia, Comet, Belyando and Suttor River Catchments.

In November 2007 the Federal election delivered a change of government which inevitably meant change for our federally funded programs. The Caring For Our Country program was announced to replace the proposed Natural Heritage Trust 3 program.

Environmental Regulations

None to report.

Events Subsequent to Balance Date

There have been no events of significance to report since the Balance Date. Funding is secure under existing contractual arrangements and all obligations are being met.

Likely Developments

CHRRUP is under contract with FBA for a transitional year of funding, covering operational and fixed costs. This will be an interim measure until the new regional investment strategies have been implemented. Looking forward, funding for NRM is expected to support similar activities and remain at similar levels as under the previous Federal Government.

CHRRUP will begin activities in two new neighbourhood catchments this financial year.

Directors' Interest and Benefits

None to report.

Indemnification and Insurance of Officers and Auditors

CHRRUP has insurance cover through AON Insurance Services for:

- \$10 million Public Liability
- \$1 million Directors & Officers
- Covered to value Commercial Motor Vehicle
- Burglary & General

Accident Insurance for staff is issued through Workcover.

Peter Maundrell & Company Pty Ltd are currently engaged as Auditors for CHRRUP.

Director *F P Daniels*

Director *K O'Byrne*

Dated this *2nd* day of *Sept* 2008.

Signed in accordance with a resolution of the Directors.





Executive Officer Report



ANNA COCHRANE
Executive Officer
(CHRRUP)

The past twelve months have been remarkable. With the conclusion of the Natural Heritage Trust program and subsequent limited on-ground works, a change of federal government and associated funding regime, CHRRUP has invested in awareness raising and educational activities to improve the knowledge of natural resource management within the broader community.

CHRRUP has used the 2007-2008 financial year to finalise and evaluate the on-ground projects developed through the Natural Heritage Trust 2 program. The staff have developed monitoring and evaluation programs with landholders to assist with measuring both the success of the projects and NRM outcomes.

2007/2008 was a year of much uncertainty in terms of governance and Federal Government funding. In November 2007 the Federal election delivered a change of government which inevitably meant change for our federally funded programs. The Caring For Our Country program was announced to replace the proposed Natural Heritage Trust 3 program. In July 2008, the guidelines and funding arrangements are still being finalised. Base funding will now be supported by a contestable bucket of money and it appears that regional bodies in Queensland will have to develop across-region and multi-stakeholder programs to compete with other groups such as AgForce and Greening Australia that are now also eligible to devolve on-ground funds to landholders. However, the future looks bright for CHRRUP. The new arrangements present opportunities for stronger relationships with our regional partners and perhaps provide avenues for direct contracts with the Federal Government.

The January 2008 Flood event severely affected our people and our region. The physical damage caused by the sheer volume and velocity of the water from the Theresa Creek and Nogo Catchments left landholders and community members in awe of the force of nature. It has also raised widespread discussions about the possible impacts of climate variability and climate change. CHRRUP played a leading role on the Central Highlands Flood Recovery Group working with AgForce, the Central Highlands Regional Council, DNR&W, SunWater and the Bureau of Meteorology to assess and plan for improvements to the flood warning network. We also facilitated improved communication between landholders, the Department of Transport and AgForce.

CHRRUP has had strong support from landholders and stakeholders at the workshops that we have held over the year. We have hosted a range of workshops covering innovative practices, skills and learning, awareness raising and community building.

Some highlights were:

- Succession Planning workshops. Over 60 landholders and their families attended full day workshops to learn about how to start planning for the future of their properties.
- Natural Sequence Farming workshops in Springsure and Capella where over 120 landholders talked with Peter Andrews about his NSF practices; and,
- the NRM Expo. The NRM Expo was held with the support of the local community to educate over 1300 primary school students from the Central Highlands about the many facets of agriculture and natural resources. It was a huge success!

An important evaluation project of the original 2001 Parthenium Action Group projects was conducted and finalised this year. Landholders who were involved in the original Natural Heritage Trust 1 project were re-surveyed and re-mapped to evaluate the impacts of incentive funding and the success of the projects. The conclusion of the project was that the on-ground works were quite successful in achieving attitude and practice change. A publication of the project summary will be released in the coming year.

CHRRUP continues to work closely with Fitzroy Basin Association and the Burdekin Dry Tropics. The next twelve months will be a period of learning and re-aligning processes to fit in with the Federal Government's priorities.

2007-2008 has been a year of much stability within the staff ranks of CHRRUP. We have had a full complement of staff for the whole year with no turnover – which must be a CHRRUP record! In June, we welcomed a new Chairperson to the Board, with Annette Smith taking over from Gail Godwin-Smith. Gail has been involved with CHRRUP for over five and a half years and her contribution has been significant. She has been an outstanding leader for the Board and has provided the staff much support and guidance over the years.

As of the 1st of July 2008, my husband and I are relocating to NSW to become farmers. I wish the staff, Board and community members of the Central Highlands all the very best for 2008-2009 and beyond.



Highlights of the 2007/08 Year

The 2007/08 year has been one of consolidation, with the Nogoia and Comet Catchment Field Officers working towards finalizing existing contracts. The majority of 2006/07 contracts have either been completed, closed or under a Deed of Variation.

The Belyando-Suttor project has been extended until the 31 December, 2008 with a further \$95,106 worth of projects funded. The Belyando-Suttor Implementation Group had a successful AGM in September 2007, with Tom Nicholas re-appointed chairperson.

HIGHLIGHTS FOR THE CHRRUP YEAR HAVE BEEN:

NRM EXPO

CHRRUP successfully applied to the Department of Natural Resources & Water for funding to host an expo for school children in the Central Highlands. The event, held at the Emerald Showgrounds on April 30, was an overwhelming achievement. Over 1,200 children and teachers in Years 4-7 from 15 schools around the region came along to learn more about sustainable Natural Resource Management. Exhibitors were sourced from DPI&F, mining organisations, Greening Australia, local cotton growers, AACC Emerald Campus, BDT and FBA to provide interactive, hands-on displays. Students were able to learn about management of riparian areas, endangered habitats of the Hairy Nosed Wombat and Bridled Nail Tail Wallaby; energy generation; macroinvertebrates in waterways; and how to identify native vegetation from the local area. Feedback from students and teachers indicated the day was a very successful and a worthwhile learning experience.

Funding has been received from BMA Community Partnerships Program to conduct an expo in 2009, in what is planned to become an annual event.

"Thank you for a great experience. Following the expo, the student council has decided to plant more trees and start a permaculture garden. Progress is moving steadily with some children working in an environment group each week." St Joseph's School, Clermont.

PETER ANDREWS' NSF WORKSHOPS

Central Highlands landholders turned out in force to meet Peter Andrews, and hear him explain first-hand his Natural Sequence approach to farming at the two workshops held in December 2007. Many people were familiar with Peter Andrews and his Natural Sequence Farming from his best-selling book "Back From the Brink", and appearances on many current affairs programmes, most notably the ABC's Australian Story. This interest in sustainable agricultural systems prompted landholders to approach CHRRUP, who provided funding and organised Peter to come to the region to run workshops on local properties. Workshops were held at Mick and Deb Lavell's property 'Kelvin Downs', Springsure, and Rhonda Ryan's property, 'Banyula', Capella on 4 and 5 December. Organisers were delighted with the turnout, welcoming over 90 people from as far afield as Rolleston, Charters Towers and Comet.

After an introductory presentation, Peter took the group on a walk along the nearby water course, illustrating how slowing the water flow down the creek will increase the sediment and nutrient deposited into the soil. Peter also talked about the other key principles of his farming system, including sustainable farm layout, contouring, the effects of salinity and the values of biodiversity.

Peter's ideas on the value of weeds, and no-burn policy generated some lively debate from the local landholders. As everyone present was keen to learn more about sustainable land management methods which can be applied to their own properties, Peter's approaches will provoke much interest and discussion around the Highlands for some time to come.

SUCCESSION PLANNING WORKSHOPS

One of the challenges facing landholders in the Central Highlands region is how to successfully plan for succession of the family business. Following discussions with landholders, CHRRUP applied for funding from FBA, and Blair Athol and Kestrel Community Development Fund to run a series of workshops in Springsure, Clermont and Capella during November 2007. Professional consultants were engaged to run the workshops, providing an opportunity to hear expert advice and develop a range of practical techniques. The workshops were tailored to landholders and covered aspects of working in a family business, life and business cycles, transition management, and implementing changes.



Sector Reports



HUMAN SERVICES SECTOR

LINDA DRAKE
Central Highlands Services Sector Group
Emerald

- A big plus for our sector group was the way services seamlessly worked together during the regional flood crisis in January. The cohesiveness and relationship of services certainly made it easier to deal with issues, planning and delivering the actions required.
- The sector has embraced the Strengthening Non Government Organisation's strategy. Organisations funded by the Dept of Communities and Disabilities Queensland are in the process of their self assessment and developing improvement plans as part of the Standards implementations.
- The Human Services Sector Director has a seat, representing Community Centres and Family Support Network Association Queensland, on the Queensland Futures Forum, a group of approx 35 principal people in state-wide non-government organisations (NGOs) and networks. The Forum has developed the Queensland Services Charter and is in the process of finalising the Compact between NGOs and Government. There are only two representatives that are not Brisbane based, so it is particularly important that the rural/regional/remote voice is heard and acted upon.
- The Human Services Group has been involved in promoting services at the Emerald Multi-Cultural Festival, Australia Day Expo, and various 'awareness campaigns' – Domestic Violence week, Mental Health Week, Autism Week, Anti Poverty Week, AGGROW Emerald.

- The Multi-Cultural Friendship Group now has over 60 members.
- The Director attended a meeting with Queensland Council of Social Services and Australian Council of Social Services (ACOSS) to begin the process of developing a Federal Compact between the sector throughout the Nation and Government. ACOSS was particularly interested in the regional perspectives put forward.
- The Central Highlands Community Consortium has been partnering for 12 months with benefits to organisations' staff, and to clients of the services. The Consortium will revisit the agreement to prioritise further actions.

Key issues for the past twelve months continue to involve the social impacts of the rapid growth of the region. This includes the attraction and retention of staff, staff and volunteer burn-out, the availability and cost of housing, and the increasing number of homeless people. There are also a growing number of people who are unable to afford basic goods, including people in paid work. Although record royalties from the region are boosting Treasury coffers, there is insufficient funding for services to address these issues. The Director Generals Taskforce is no longer in consultation with the Human Services Sector, and there has been an apparent break-down in their ability to tackle these concerns.



FOOD & FIBRE SECTOR

NIGEL BURNETT
Colorada Cotton
Emerald

- The floods in January 2008 filled the Fairbairn Dam, which should see water allocations assured for the next three years. This is welcome news for producers, who were initially on reduced allocations.
- Clean up after the floods is ongoing, with many producers suffering damage to irrigation infrastructure, including channels, pumps and laser leveled paddocks. The cost of opportunity loss must also be added to the loss of crops and machinery.
- Flood waters have also been responsible for the spread of weed seeds and plants across paddocks and along creek and river channels, resulting in increased levels of infestations.
- Regulation of levee bank structures on the flood plain have become a cause for concern. This flood has caused mining companies and irrigators to reassess their flood protection. However, the impacts on the river, the flood plain, and neighbouring properties needs to be paramount when considering these developments.
- Fuel, fertilizer and chemical cost increases have had a major increase on profitability, which unfortunately has not been offset by the improved commodity prices.
- Looking ahead, the Grains Best Management Practice (BMP) pilot program is being implemented. Funding has been made available for participants to come up to speed with Best Practice in grain production. The participants are also asked to provide feedback and fine-tuning for the Grains BMP to be rolled out.
- CHRRUP has also assisted in the upgrade of CDMA to Next G technology on weather stations and telemetry stations owned by irrigators. This assistance was organisational as well as through a shared funding arrangement.



MINING SECTOR

COLIN MOFFATT
Queensland Resource Council
Brisbane

SUSTAINABLE DEVELOPMENT. During the last 12 months the QRC have been active in their interactions with both the Queensland and Federal Governments regarding Sustainability Legislation and policy progress and development including;

- Carbon offsets and Emissions Trading
- Clean Coal Technology Projects including Carbon Capture and Storage

Through the Queensland Clean Coal Council, the state government (\$100m) and Queensland coal companies (up to \$26m) are supporting the feasibility study for a two-stage roll out of the "ZeroGen" coal gasification and carbon storage technology. The project undergoing feasibility involves:

- commissioning an 80 megawatt coal gasification demonstration plant near Rockhampton. to demonstrate the capture of up to 75 percent of carbon dioxide emissions and associated underground storage capability.
- deployment of a commercial-size 300 megawatt coal gasification plant with carbon capture and storage facilities including the capture of up to 90 per cent of CO2 emissions.

ENVIRONMENT. Queensland Resources Council Environmental Policy activities during the 2007/08 year have included;

- Progressive Rehabilitation. Development of improvements to the 'sign-off' process for progressive rehabilitation of mine sites. This will require amendments to some current progressive rehabilitation guidelines to better incorporate the concepts of residual risk and the needs of community consultation.
- Environmental Standards Transition. Legislation standardising environmental protection conditions across mining operations in Queensland, from special agreement Acts covering nine Queensland mining operations, to the Environmental Protection Act. These changes were needed to provide standard and updated environmental protection regulations for these mines, from old and outdated legislation.

The QRC Environment Committee provides the forum for the resolution of these policy discussions which continues to maintain relationships with other Natural Resource Bodies throughout the state, including CHRRUP.

SOCIAL POLICY. Achievements during the year included;

- Development of a Resource Communities Partnership Agreement as a result of a meeting during December 2007 of representatives of Queensland Government departments, Mayors and CEOs of Central Queensland local government areas.
- Continued promotion of "Women in Mining" through a large range of initiatives and events, highlighted by the QRC's third annual International Women's Day Breakfast and Resources Awards for Women (RAW) presentation on 7 March 2008 in Brisbane.
- Support of Member Companies with the development of Aboriginal Cultural Heritage Management Programs and Agreements with Traditional Owner Groups associated with their Mining or Resource Operations.

EDUCATION AND TRAINING. The QRC, with its member companies, have been busy supporting and promoting Education and Training in the Resource Sector through a large range of initiatives during the year. The most significant of these has been the signing of a Memorandum of Understanding between the Queensland Resources Council and the CSIRO which commits them to collaboration and promotion of sector-related science careers, the attraction and retention of women in the Resources Sector, and the promotion of science in Queensland Minerals and Energy Academy (QMEA) schools. The 18 QMEA schools throughout Queensland provide direct links between school and the Resources Sector and pathways into resources-sector careers. The academy is an initiative of the Queensland Resources Council and the Queensland Government's Department of Education, Training and the Arts.

HEALTH AND SAFETY. Through the Queensland Resource Council, significant Industry Safety activities during the year included;

- The continued promotion of the documentary "Make Safety Their Monument" following its launch in August 2007. The documentary covers the six worst mining disasters in Queensland's history, the lessons learned and the way ahead.

The QRC Health and Safety Committee, comprised of Senior Officers of member companies, continues to provide the forum for the development of submissions regarding Industry Health and Safety Policy and Legislation and the promotion of Industry Best Practice.

The biggest issues for last 12 months have included:

SKILL SHORTAGE. The ongoing demand for a broad range of skills required in the sector continues to provide a major challenge in a climate of significant prosperity. As reported, many QRC programs aim to assist with both short and long term initiatives to overcome this issue, whilst also understanding the needs of other sectors in rural communities.

CLIMATE CHANGE. The challenge for the resource and energy sectors has been and will continue to be to work with the Queensland and Federal Governments to find solutions to the ongoing energy demands of all communities whilst maintaining appropriate parity with the Global community.

The Resource and Mining Sector expects to see a continued high level of activity for the next 12 months which will provide sustained pressure on the need to manage the same sorts of issues as we saw during the previous year. The increasing focus on Energy and Climate Change provides an even stronger motivation to ensure that the QRC works closely with communities and Government on a broad range of Natural Resource Management issues.

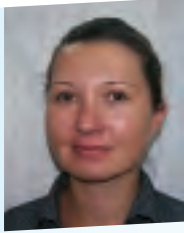
The Queensland Resource Council's overarching mission is to work to secure an environment conducive to the long term sustainability of the minerals and energy sector in Queensland. Its role in achieving this mission is to support the Queensland Resource Sector:

- Building strong community and stakeholder support for the minerals and energy sector's social license to operate
- Implementing strategies to secure key resources, including skills, economic and community infrastructure
- Promoting a sustainable regulatory environment for the minerals and energy sector in Queensland.





Sector Reports Continued



CONSERVATION SECTOR

SARA HANGGI
Capricorn
Conservation Council
Rockhampton

The Capricorn Conservation Council has been involved with a range of activities over the past twelve months.

An ongoing campaign has been launched against the placement of a Rockhampton Regional Superdump in amongst a rare cluster of 13 remnant volcanic trachyte plugs. A community outing to the proposed site was organised, which was attended by 50 people.

CCC is also campaigning against 4WD access to Three Rivers beach (a draft EPA Byfield Management plan has recently been released). Another campaign is underway to raise awareness of the threats of proposed Dams and Weirs to Fitzroy river turtle populations and other native flora and fauna.

Community activities and workshops have been well attended. The Walk Against Global Warming was held in Rockhampton in November 2007, which saw 100 community members campaigning for action on Climate Change. An Environmental Defenders Office Environmental law workshop was held at the CCC Hut for 30 people. CCC has published the 'Plants of Capricornia' by Melzer & Plumb, and is promoting and selling this book.

Ongoing conservation matters include urban development in coastal areas, industrial developments, and dams and weirs planned for the Fitzroy River. Other areas of possible developmental impact are Great Keppel Island, and beach driving impacts to Three Rivers beach.

Capricorn Conservation Council looks forward to working with CHRRUP into the future to learn about conservation issues which are shared across the regions of the Fitzroy Basin from Central West to the Capricorn Coast. Capricorn Conservation Council aims to contribute towards CHRRUP initiatives and to collaborate on community efforts to preserve the health of our natural environments.



PASTORAL SECTOR

TRENT JEPPESEN
"Olive Vale"
Comet

The ongoing drier-than-average weather was finally broken early this year, with welcome soaking rain for the lucky ones, and record flooding for the not-so-lucky. The worst hit area was north of Clermont with some producers having massive losses of stock, pasture and fencing, and some lucky not to lose their lives. AgForce played a crucial role in co-ordinating the feeding and movement of flood-stricken stock with the use of helicopters and donated fodder.

The rain has put most producers in their best position for many years. Most producers have seen the dry times off and come out the other end with a few scars to show for it, although a few are still waiting for their share of the rain and are in a bad way.

The Equine Influenza (EI) situation was not a direct problem for most producers in the region, but those with more than one property were having problems shifting mustering horses, and horse breeders were faced with many restrictions.

The rising value of the Australian Dollar over the past 12 months has dramatically reduced the returns for those producers who supply the main export markets to Japan, the US and Korea. However, the European market is not far behind levels of previous years.

Rising interest rates have taken the edge off the previously booming property values, and there is no relief in sight in the near future.

Fuel prices are having a big impact on the profitability of all producers, and there is only so much you can cut back on while still running your business realistically.

With many producers carrying heavy debt loads, the combination of lowered income, rising interest rates, and rising fuel prices are a very real threat to their future. The ramifications of the debt crisis in America are slowly but surely showing up in our daily lives, and we are a long way from the worst of it yet.

CHRRUP has been very helpful to those producers who have taken up the opportunity to gain funding for fencing to soil types, fencing off waterways, and tackling some problem weeds.

CHRRUP has been able to provide the credibility over a period of time as the contact point between the Government agenda and the funding to implement it, and the landholder who volunteers to take part in things he or she can see as a benefit to their business and/or their property. The Government can't do it without the landholder, and the landholder can get some very welcome assistance from the Government, and CHRRUP is in the middle keeping the whole thing working smoothly for the benefit of the Central Highlands region.

(Report prepared by Russell Purvis, Proxy)





CULTURAL HERITAGE SECTOR

LINDSAY BLACK
Kairi Traditional Owners
Springsure



INTEGRATED CATCHMENT MANAGEMENT SECTOR

TOM NICHOLAS
Belyando-Suttor
Implementation Group
Clermont

- A successful application has been lodged to have the Yumba Burin Heritage Association registered as an Aboriginal Cultural Heritage Body by the DNR&W. This registration is applicable to the area north of Springsure to Emerald, and is bordered by the Comet and Nogoia Rivers. This registration means the Association is now recognised as being able to speak for, and represent, the Aboriginal parties in the area.
- Two Ka Ka Mundi trips were conducted during the year. The number of international people on the tour is growing – we have had a group of Japanese, including one of the leading scientists involved with climate change in their country, and another group of South Africans. Several of the CHRRUP, FBA, and DNR&W staff have also been on the trip. The Ka Ka Mundi brochure, produced with assistance from CHRRUP, is very good and is generating a response from people in NSW, Victoria and South Australia as well as the local area. The rate of enquiries transformed into confirmed bookings has increased.
- A Cultural Heritage survey has been conducted for an area on 'Avocet', which is very rich in old Aboriginal culture. Reports have been completed for the Cultural Heritage body in Brisbane, and the FBA funding bodies.
- Ensham Resources Mine has provided funding for a keeping place at the Emerald Botanical Gardens for the Kara Kara and Garangbul Aboriginal parties to house their artefacts. These artefacts were found after a cultural heritage clearance conducted at Ensham Resources Mine. The keeping place has been completed, with traditional paintings by local artists on the walls, and the official opening ceremony will be held on 6 September.
- In response to concerns raised by Yumba Burin, the Council has done an excellent job in restoring the vegetation along the fence-line at Fernlees Watering Reserve. Fallen timber was chipped, creek crossings rebuilt and the area revegetated where necessary.
- Lindsay Black has been invited by the APRA (Australian Professional Rodeo Association) to help set up a tribute at their museum in Warwick. The tribute will recognise Aboriginal rodeo riders from 1940-60, a time when Lindsay was competing successfully at championships around the nation.
- As CHRRUP moves into the new catchments around Buckland and Billaboo in the coming year, it would be good to see a developing interaction with local Aboriginal groups.

The January 2008 floods in the Belyando-Suttor Catchment were one of the worst in history. There is a very large area to rejuvenate, which will necessitate pasture reseeding and starting from scratch. This area is now very over-run with parthenium. Other areas are recovering well, due to follow up rain received during the year. Most stock losses were due to an outbreak of 3-day sickness affecting the herds. Land-holders are showing their resilience, and continuing with their contracted projects as and when they can regain access to their properties, fencing contractors and materials.

The Belyando-Suttor Implementation Group (BSIG) held their quarterly meeting in Clermont in June, and were joined by the Desert Upland committee to listen and share experiences with guest speakers. These speakers included George Bourne, from DNR&W, Emerald who spoke about the State Rural Leasehold Land Strategy (Delbessie Agreement) and how lease-hold landholders will be affected. Judy Warner from Burdekin Dry Tropics provided an overview of the new 'Caring For Our Country' funding from the Federal Government, and spoke about her focus on community engagement for the next twelve months. Bronwyn Roberts, CHRRUP Field Officer, gave an update on local natural resource management projects. The major outcome from the BSIG meeting was the decision to hold an extra-ordinary general meeting before the Annual General Meeting in August, to reinvigorate the group, and discuss future projects.

Bronwyn Roberts continues to do a great job as Field Officer for the Catchment, and it is reassuring to see her contract has been extended until December 2008. The role of the field officer needs to be maintained to ensure continued community engagement, and continued growth in natural resource management.





Sector Reports Continued



GRAINS SECTOR
LARRY DANIELS
Theresa Downs,
Emerald

The Central Queensland region experienced an improved outlook with an above average winter crop, followed by an above average summer crop. These yields have benefited from higher grain prices.

A highlight for the industry was the Coggan family from Meandarra, who now hold the world record for the most area (905ha) sown in a 24 hour period.

The biggest issues for the sector include flood and storm damage to crops and soil after the January floods, and the high fuel, chemical and fertiliser prices. The increasing costs of freight, and the lack of availability of freight trains and wagons are also having a major impact.

It is hoped the next twelve months will see growers working with CHRRUP, with a focus on encouraging pasture cropping, rotational grazing systems, and crop rotations to save soil, keep better ground cover, and a better utilisation of sun, rain and nutrients.



LOCAL GOVERNMENT SECTOR
CR KERRY HAYES
Central Highlands Regional Council,
Emerald

Since the last Sector Report from Cr Sharon Kirk, Local Government in Queensland has been through the most tumultuous period of change in its 108 year history. The former shires of Peak Downs, Emerald, Bauhinia and Duaringa were amalgamated into one shire known as the Central Highlands Regional Council (CHRC) as of March 15, 2008.

The subsequent elections have seen the Council comprised of eight Councillors led by former mayor of Emerald Shire, Peter Maguire. The majority have served as councillors in the four former shires, bringing a wealth of experience as they set about dealing with the very difficult task of governance for a new Regional Council that covers over 60,000 km².

KEY ACHIEVEMENTS

- The Local Transition Council appointed various sub-committees, and Bryan Ottone as acting CEO to oversee change to the new Council.
- CHRC appointed Bryan Ottone as CEO for the new Council.
- Extensive consultations with communities by Councillors, Area Executive managers and staff in the new region.
- Addition of Community Development Portfolio to Regional Council operations.

ISSUES

- Staff recruitment in critical operational areas (currently 450 staff)
- Management and maintenance of road networks.
- Communication and computer linkage to various regional offices.

CENTRAL HIGHLANDS FLOODS

In the middle of this Local Government transition, many parts of our region experienced significant and very damaging floods. Damage to property, livestock and infrastructure in the Region exceeds \$50 million dollars. When taking the Ensham Resources Mine experience into account then the cost to the area is much higher. A lot of hard work has been done by many local agencies in dealing with the various issues that are still continuing. My thanks go to Anna Cochrane who actively participated in the Central Highlands Community Recovery Programme by involving herself in the Environment sub-committee, which was tasked to assess and recommend improvements to warning systems, gauging stations and communications. This work is critical to the flooding debrief and the recommendations are an extreme priority for future events. CHRRUP should have a role in these developments, and we look forward to the possibilities over the next twelve months.





ECONOMIC DEVELOPMENT SECTOR

PETER DOWLING
General Manager
Central Highlands Development Corporation
Emerald



HIGHER EDUCATION SECTOR

DR JIM SANDS
Campus Manager
Australian Agricultural College
Corporation
Emerald

FLOOD RECOVERY - played a significant role in the recovery process with communications, business assistance, re-establishment of business operators, insurance matters, community information sessions, the 'CH First' Buy Local Campaign, regional marketing and the start of a detailed Economic Impact Assessment.

BOWEN BASIN MAYORS GROUP - continue to engage with State Government Directors General regarding the consequences of rapid growth. A draft "Sustainable Resource Communities Partnership Agreement" has been developed between the State Government, Queensland Resources Council and the Local Government Association of Queensland and all members to progress matters within a communications framework.

SKILLS FORMATION STRATEGY - established a project to focus on strategies to assist the local government sector in the skills area.

SKILLING HIGHLANDERS - commenced a 12 month project to assist targeted areas of our community access low cost or free accredited training to attain entry level skills.

REGIONAL EMPLOYERS ALLIANCE PROJECT - REAP - A joint partnership with local business and industry. We are looking at matching the skills and qualifications of the traveller (grey nomads and others) with our business and industry needs to help fill the labour shortages.

AFFORDABLE ACCOMMODATION - with the support of the Queensland Resources Council we are investigating the growth plans for mining in the region to determine the accommodation requirement in the coming 5 to 10 years.

CH ADVANCE - BROADBAND DEVELOPMENT - started a two year contract to focus on mapping the broadband we have in the region and liaising with community, primarily business, to determine their needs to further develop uses and applications for broadband.

EMERALD MULTICULTURAL FESTIVAL - delivered another wonderful regional event with in excess of 6,000 people attending with strong acceptance from the local communities.

COUNTRY WEEK, BRISBANE - showcased the region at this event from a lifestyle, tourism and business perspective.

REGIONAL DEVELOPMENT FORUM - in excess of 100 people attended the first forum focusing on mining and local government. Feedback was extremely positive and a good way to share valuable information across community.

CHDC POST AMALGAMATIONS - CHDC has continued in its existing form with a reduced membership from five local governments to one with Central Highlands Regional Council. CHDC celebrated 10 years of operation.

Some of the biggest issues the region will face in the year ahead will remain:

- The impacts of rapid growth
- Sustainable Resource Communities Partnership Agreement
- Skills and labour force enhancement
- Affordable accommodation
- Local government reform - amalgamations
- Flood recovery

LOOKING AHEAD
The economic development sector forecasts a strong ongoing relationship with CHRRUP in the coming year. We believe there are more opportunities to learn about natural resource management issues that will assist our development as a sector representative and regional organisation.

Like most businesses in the Central Highlands that struggle to find employees, the Higher Education sector in CQ would like to have more students. CQU Emerald Campus has got around 50 internal students in Education and Business (Accountancy degree started in 2008) and there are 250 external CQU students across the region. CQU is currently going through a re-badging exercise. The university is grouping its research activities under 3 Research flagship programs; Healthy Communities, Resource Industries and Sustainable Development and Teaching Practices for Distributed and Distance Students. Professor John Rolfe is continuing research on Regional Development Economics in CQ and Professor David Midmore's Centre for Plant and Water Science is continuing with oxygenation work on irrigated crops in CQ.

AACC Emerald Campus has around 50-60 students with the bulk of students specializing in the horse or beef courses. On the 1st of July, 2008, AACC as a corporation moved from the Department of Education & Training into the Department of Primary Industries and Fisheries. This move is to help AACC and DPI&F capitalize on potential synergies in terms of resources, people and connections with industry. The objective is for both organisations to better deliver services more efficiently. DPI&F have recognised the labour skills shortage is a major problem in Queensland agriculture today, and addressing this issue is one of the 3 pillars to the Minister's "Fresh Approach" for the department.

LANDCARE SECTOR

The position of Landcare Director was vacant as the Annual Report went to print.





Representative Reports



FITZROY BASIN ASSOCIATION
SUZIE CHRISTENSEN
CEO

Major activities influencing community based Natural Resource Management that have occurred in the past year included the announcement of continuation of NHT, followed by a change of government at election and the announcement of a new program "Caring For Our Country." The good news from these developments was that it included a commitment to long term funding for NRM, and that the hard work that went in pre-election paid off. The Reef Rescue component of Caring For Our Country was a direct result of working in partnership at the state level with other reef catchments and peak industry bodies to develop a submission and lobby for increased investment in on-ground action for water quality outcomes. Of the \$200 million package, \$146 million has been dedicated to direct incentives for landholders to improve practices. FBA believes we can secure upwards of \$20 million of that investment of the next five years, providing a solid foundation to continuing the momentum that has been generated over the previous five.

The less than exciting program change under the new Commonwealth funding scenario has been the return to fully competitive open calls for funding, based on a yearly business plan. FBA believes that this process is a regressive step, which may limit the potential for regionally strategic investment, solid partnerships, and the capacity to realize the longer term nature of NRM change. On a positive note, the success experienced in the region is recognized at the national level, potentially allowing us to access a greater proportion of the funding available. We look forward to working with all partners including CHRRUP to achieve these goals.

Apart from overcoming these distractions, FBA has been very pleased to see a number of achievements in the operational area of our business. Leadership of the Grains BMP process and involvement in the CQBEEF initiative has demonstrated our firm commitment to working with industry and agency partners to deliver change. During the past year, a number of studies commissioned to improve our planning and investment decisions have come to fruition including determination of regional ground cover levels and several studies related to investment to improve outcomes for biodiversity. As well, changes have been made to the approach taken to protect cultural heritage.

During the past year, several reviews were undertaken. These have demonstrated the value of several initiatives undertaken since 2001. Chief among these was the review of the neighbourhood catchments approach to on-ground delivery. The review found the approach to be very useful and likely to be the foundation for lasting improvements to resource condition. A number of recommendations were also made; these are either under implementation or will be soon. Other reviews included: Parthenium Action Group activities; provision of software and training in computer mapping; and the base station project in the Don catchment.

Throughout the year, we have been very pleased to support our subregional partners and look forward to continuing this support in the foreseeable future. Our partners, along with FBA itself, have been very fortunate to retain staff through this period of change. This places us well to take maximum advantage of the funding opportunities becoming available to us.



BURDEKIN DRY TROPICS NRM
BOB FRAZER
CEO

During the year BDTNRM continued to build on achievements of the recent past, and made significant ongoing improvements to its operational performance, systems and processes. The organisation was also successful in recruiting the additional staffing capacity needed to support delivery of an 'end of NHT2' peak in levels of investment in improved natural resource management outcomes. The transition from NHT2 to Caring For Our Country resulted in the loss of 8 of these fixed term staff at 30 June.

Over the period the Chairman and Directors also worked diligently to improve the Company's governance processes, including the ability of the Board to monitor the organisation's financial and operational outcomes. One of the initiatives implemented by the Chair during the period was the adoption of a skills based approach to recruitment to fill a number of vacant positions on the Board. This approach assisted to accelerate uptake of the governance related recommendations of recent independent reviews of the organisation. Implementation of these recommendations included activities such as a review of the organisation's Corporate Strategic Plan and a review of Board and individual Director's performance.

In terms of Operational outcomes, and our investment in delivery of NHT and NAP funded activities, \$22,991,611 has now been committed since receipt of the first tranche of that funding in mid 2005. This comprised approximately \$17,968,000 of actual expenditure to 30 June 2008, and a further \$5,022,927 in contractual and operational commitments to 31 December 2008.





ENVIRONMENTAL PROTECTION AGENCY

JULIANA MCCOSKER
Principal Biodiversity Planning
Officer,
Emerald

The year in review saw the staff of BDTNRM and our delivery partners such as CHRRUP, Desert Uplands and Dalrymple Landcare, meet an extraordinary demand in terms of delivery against milestones and outputs. Their work during the period resulted in successful completion of a total of 70 Regional Investment Strategies (RIS) milestones, and another 29 rescheduled or superseded, leaving only 17 milestones remaining to be completed before December 2008. In summary, of the 264 Milestones in the BDT NHT2 and NAP funded RIS, just over 81% (214) have now been successfully completed, and a further 13% (34) have either been rescheduled by way of Deed of Variation with our delivery partners, or have become superseded. This leaves only 6% (17) of all milestones for 2004-2008 to be completed. I invite you to visit the projects section of our web site www.bdtprm.org.au for information about what this means in terms of improved social, economic and environmental outcomes for our landholders and communities.

Those outcomes could not have been achieved without the dedication and commitment of the staff and members of the Boards and Management Committees of our respective organisations. Our successes have also been dependent on the willingness of the people on the land and in our towns to work with us as we seek to create a community that understands and exercises a high level of stewardship in the sustainable management of its natural resources.

Thank you for working with us during the past year to bring this vision closer to being a reality.

The resource boom continued to influence our workload during 2007/08. With six new mines with Environmental Impact Statements processes commencing in 2008, and a major exploration being conducted with intent to construct a mine, this activity looks to continue into the future. The Department has conducted five Environmental Impact Statement processes with existing mines, and ten significant amendments with Environmental Management Plan assessments. The number of Mining Activity Leases and Permits being issued continues to increase.

A major achievement for the year was the commencement of the Northern Hairy-nosed Wombat relocation project. With assistance and funding from Xstrata, a satellite population is being established near St George, Queensland. Work in local national parks continues, with the upgrade of Blackdown Tableland Lookout, completion of complex upgrade at Epping Forest, and two successful horse culls at Carnarvon National Park. Biodiversity condition, plant and bird indicators were found to have good correlation with Ground Cover Indices within the region.

The flooding during January 2008 has been one of the biggest issues for the sector. Numerous repairs to roads and fences have been carried out at Salvator Rosa, Minerva Hills, Nairana and Blackdown Tablelands National Parks. A number of statutory tools (Environmental Evaluations, Transitional Environmental Programs) were applied to some organisations for flood related non-compliance.

EPA restructure has changed the boundaries of Emerald office administration, and the transfer of work between regions will be negotiated by the Regional Managers. Other issues which will impact on the Department include the lack of subsidized housing for park staff, the Carnarvon NP now coming under one management unit, and the development of methodology to undertake lease renewal inspections.

EPA continue to be involved with CHRRUP activities, enhanced by a 'Show and Tell' morning tea where CHRRUP and EPA staff went through their roles and responsibilities and identified areas of cooperation. This is planned to become an annual event.





Representative Reports Continued



DEPARTMENT OF NATURAL RESOURCES & WATER

GEORGE BOURNE
Senior Resource Management Officer,
Emerald

The 2007/08 year has seen many highlights for the Department. Some of these activities include:

DELBESSIE AGREEMENT (STATE RURAL LEASEHOLD LAND STRATEGY)

- Developing assessment guidelines for lease assessment (currently awaiting approval by Minister's Advisory Committee).
- Central West Region already received applications to renew leases covering in excess of 500,000ha.
- Expect to be able to start assessing leases in Oct-Nov 2008.
- Four positions have been filled (2 Emerald, 2 Longreach).
- Staff have been trained in pasture identification, soil degradation, administrative processes of lease renewal.

STATE LAND ASSET MANAGEMENT

- The Land Act 1994 was amended in January 2008 to help streamline administrative dealings and introduce new provisions to underpin the State Rural Leasehold Land Strategy – known as the Delbessie agreement.
- Land has been provided in high growth Mining Towns for urban development. Land has been made available to Local Governments and directly to mining companies.
- Fire & Pest management on Unallocated State Lands at the Gemfields and Willows has been carried out.

LAND MANAGEMENT

- Presented information on pasture monitoring sites, and continued to collect data.

VEGETATION MANAGEMENT

- Narrowing ongoing application and PMAV application backlogs to within departmental service standards.

ONEPLAN

- Filled regional positions (Central West Region located in Emerald).
- Clarified OnePlan direction, and confirmed direction with industry reps and RGC reps.

SCIENCES

- Gathered a large amount of valuable hydrological data from Gordonstone Creek Neighbourhood Catchment during Jan-Feb 08 Floods.
- Held Controlled Traffic Farming information meeting in Emerald, at which findings from paddock scale trials in Gordonstone and Spottswood Creek Neighbourhood Catchments were presented.



DEPARTMENT OF PRIMARY INDUSTRIES AND FISHERIES

KEVIN MCCOSKER
Senior Project Officer
Emerald

A snapshot of activities over the last year include:

CQBEEF

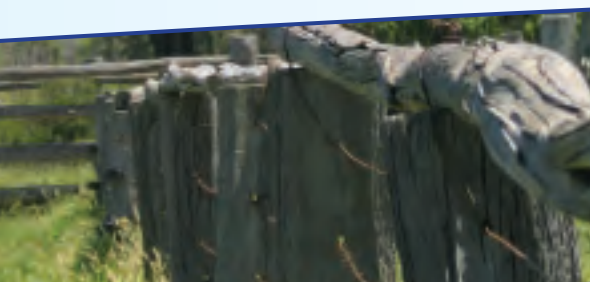
The CQBEEF project has developed as a partnership between graziers, FBA and subregional groups, and DPI&F. The project has gone from embryonic to functional over the last year.

- There are currently 4 groups of graziers operating throughout the Fitzroy catchment, with plans for another 4 to initiate in the latter half of 2008.
- Several of these new groups will operate in the Central Highlands. The first will be in the Billaboo Priority Neighbourhood Catchment.
- DPI&F have appointed three new extension officers to work within the project, at Biloela, Rockhampton, and Emerald. Another officer is to be appointed to Emerald during 2008-09.

GRAINS BEST MANAGEMENT PRACTICE

The Grains BMP project is a partnership between AgForce, FBA and subregions, and DPI&F.

- Two DPI&F officers are working full time on the project on a statewide basis.
- The BMP program is being piloted with growers in the Central Highlands, in collaboration with CHRRUP field staff.
- The first of the modules to be tested was Pesticide Application. Staff from DPI&F, CHRRUP and consultants have run self-assessment workshops, training, and developed Property Action Plans and projects with growers.
- During the 2008-09 year the same process will test new modules on Farm Design & Layout, and Managing Rainfall.





CENTRAL HIGHLANDS NATURAL RESOURCE MANAGEMENT GROUP (OBSERVER)

CATRINA WOLSKI
Project Officer,
Capella

VEGMACHINE

VegMachine is collaboratively developed GIS viewing software which utilises satellite imagery to provide estimates and benchmarks of cover (ground or tree) since the 1980s on most of Northern Australia's grazing country. DPI&F scientists have been working on practical applications for the technology.

- A sub-regional support package has been developed and provided to CHRRUP and FBA field staff. The package allows easy analysis of ground cover means and trends over time and will be a useful tool in identifying and prioritising areas for effort.
- DPI&F staff will be offering training in the use of the VegMachine software to agency and NRM staff over the next year.
- Toward the end of the dry season, DPI&F will be conducting rapid land condition assessments through a broader area of the Fitzroy Basin (and more of the CHRRUP area) including areas impacted by recent flooding.

FITZROY BASIN WEED MANAGEMENT STRATEGY

CHNRMG and CPMG (Capricorn Pest Management Group) in conjunction with FBA have published the "Fitzroy Basin Weed Management Strategy". The purpose of this document is to identify the key weed species in the Fitzroy Basin Region. It identifies the key weed management priorities for the area as well as allowing us to monitor and evaluate the effectiveness of future weed programs. The strategy will be a tool for weed management for groups across the Fitzroy Basin Region as it will enable them to plan and prioritise weed control programs across the region.

UNDERBODY WASHDOWN FACILITY

The Central Highlands Regional Council underbody washdown facility is now fully operational. The launch of the facility was held on the 30th July 2008 with more than 40 people attending. Support for the facility was received from FBA, CHRRUP, Rio Tinto, Ensham, Australian and Queensland Governments, Central Highlands NRM Group and the Department of Transport.

BLUEPRINT FOR THE BUSH

Earlier this year CHNRMG and CPMG were successful in their application for around \$400,000 from the Queensland Governments "Blueprint for the Bush" funding program to undertake strategic weed control across the Fitzroy Basin Region. Some of the projects so far have included the control of Rubber Vine, Parkinsonia, Giant Rat's Tail Grass and Chinese Apple across the region.

ENVIROFUND PROJECTS

CHNRMG successfully applied for funding for 4 projects for landholders through the Australian Governments "Envirofund" program. Over \$97,000 has been received to help landholders target Harrisia Cactus, Rubber Vine, Parkinsonia and Parthenium on their properties.

FBA AND CHRRUP WEED PROJECTS

This year in CHNRMG in conjunction with CHRRUP have completed the following weed projects:

Glencoe Parkinsonia Control Project
– 2 properties, \$40,600

Parkinsonia Control in the Mosquito Ck Catchment – 2 properties, \$25,900

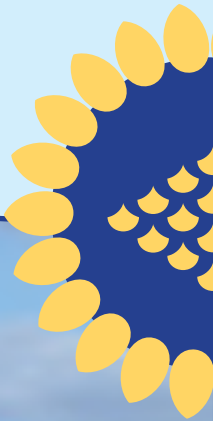
Springsure Ck - 10 properties, \$51,425 plus \$39022-50 from the Blueprint for the Bush funding.

Control works are still continuing in the Fox Creek and Mistake Creek Catchments in the Belyando Suttor region. Later in the year there are plans to undertake control of the Hymenachne in the Nogoa River and start a Parkinsonia project in the Wolfgang Creek Catchment.



CHRRUP

People • Landscapes • Communities



Contact Details

Central Highlands Resources Use Planning Co-operative Ltd (CHRRUP)
13 Borilla Street PO Box 115 Emerald Queensland 4720
Phone 07 4982 2996 Fax 07 4982 2985 www.centralhighlands.com.au/CHRRUP