



CHRRUP

People • Landscapes • Communities

Investing in your Industry 2004 - 2007



CHRRUP has made a significant contribution to the Central Highlands community, agricultural industry and environment in the three years between 2004 and 2007.

Over the three years, CHRRUP with the support of the regional NRM bodies, Fitzroy Basin Association and Burdekin Dry Tropics NRM, has invested a total of \$2 736 632 in the Comet, Nogoia and Belyando-Suttor River Catchments. Landholders contributed \$5 309 083 to invest a total of \$8 045 715 in the management of natural resources.

In 2004, the CHRRUP region was divided into 34 Neighbourhood Catchments (NC). At a meeting attended by the CHRRUP Board and community members, each NC was ranked on a high value-high risk basis across Biodiversity, Water Quality, Pests & Weeds, Salinity, Sediment Delivery and Community Activity.

With reference to local knowledge, six catchments were chosen for CHRRUP to actively work in over the three years from 2004 - 2007.

Each catchment was designated a Field Officer responsible for engaging with landholders, managing the incentive funds and providing training. Landholders had the opportunity to work with CHRRUP to improve their natural resource management through:



Property Mapping & Planning



Grazing Management



Sustainable Farming Systems



Sustainable Irrigation Systems



Salinity Prevention and Remediation



Rivers, Creeks & Wetlands



Strategic Weed Control



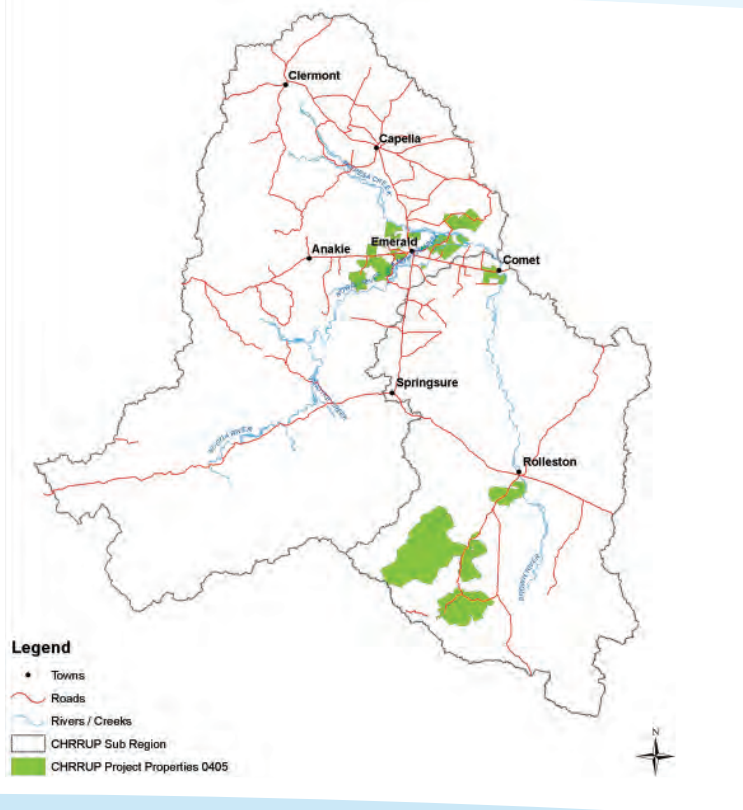
Biodiversity Management



Training and Workshops



ED IN YOUR REGION



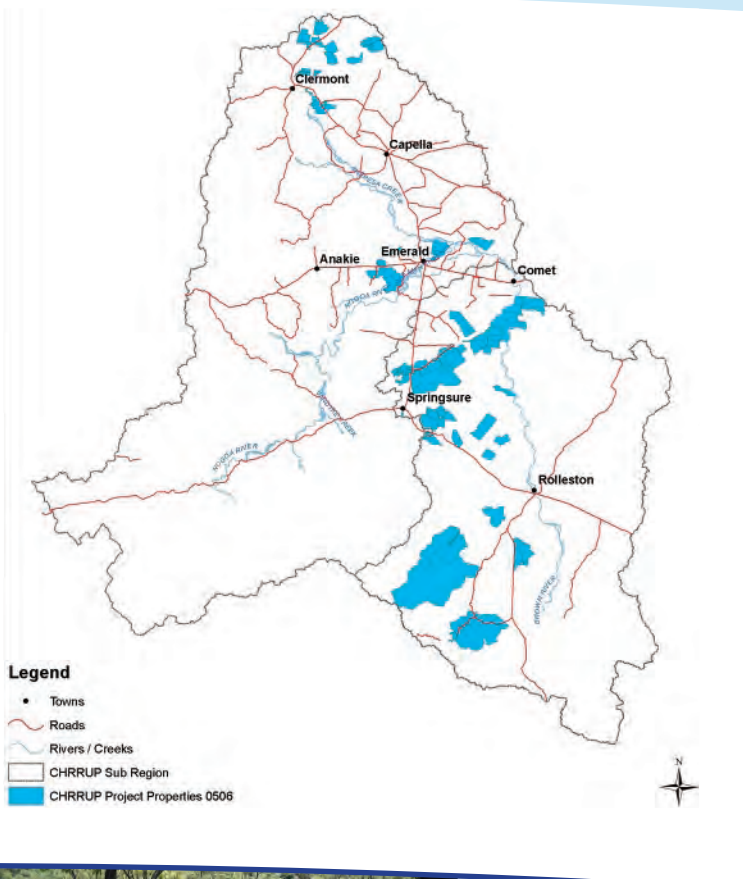
CHRRUP PROJECT PROPERTIES 2004 - 2005

Emerald Neighbourhood Catchment

In 2004/2005, CHRRUP invested over \$400 800 to landholders in the Emerald Neighbourhood Catchment to undertake 49 property management plans, 39 salinity prevention & remediation projects, water quality training, river & stream bank management, 3 strategic weed control projects and 4 biodiversity projects.

Carnarvon & Consuelo Creeks

The Carnarvon & Consuelo Creek catchments cover more than 263 900 ha, into which CHRRUP invested \$366 500. Landholders benefited from property management planning, the purchase of farm management software, Control Traffic Farming axle alteration on machinery, on-farm water quality event monitoring, fencing to landtype, river bank fencing and placement of off stream watering points, strategic weed control for Giant Rat's Tail Grass and 7 biodiversity projects protecting and managing 48 949 ha of high value vegetation.



CHRRUP PROJECT PROPERTIES 2005 - 2006

Minerva, Springsure & Orion Creeks

Working with existing community groups such as AgForce and the active Sustainable Farming Systems group, CHRRUP & FBA provided \$440 700 in funding for this catchment. 69% of the catchment was involved in developing property management plans in conjunction with projects to undertake farm machinery modifications, topographical mapping, farm planning software, provision of water quality sampling kits, fencing to landtype, erosion control along waterways, biodiversity preservation and strategic weed control.

Wolfgang Creek

The Wolfgang Creek Catchment has an active Landcare group that CHRRUP worked extensively with in 2005 - 2006. Landholders participated in property management planning, workshops and training. There was good uptake of cropping system improvements projects, water quality monitoring and training. Healthy creeks and wetlands, and grazing management projects were also favoured. CHRRUP invested \$158 000 in the Wolfgang Creek region.





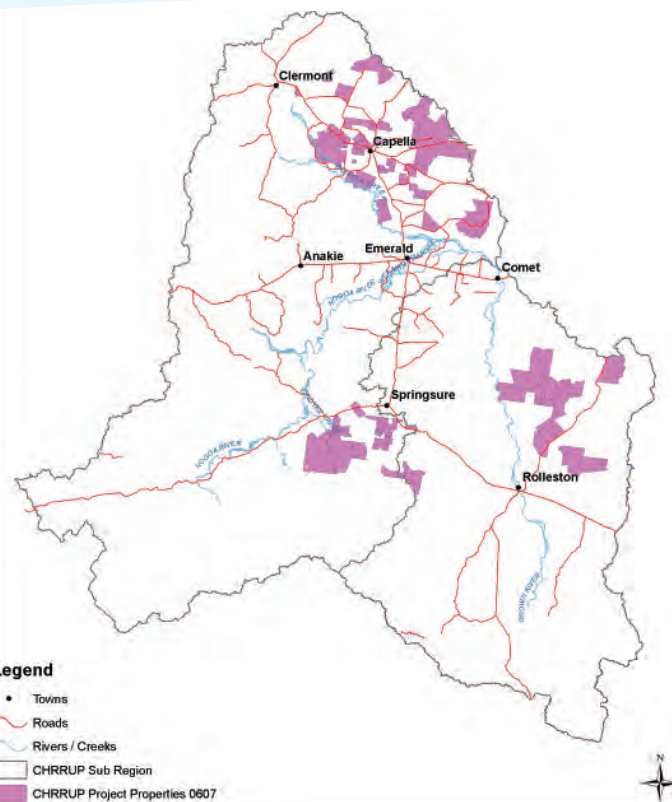
CHRRUP PROJECT PROPERTIES 2006 - 2007

Capella Catchment

The Capella Catchment received \$403 648 from CHRRUP and FBA in 2006-2007. 46 properties across the catchment worked with CHRRUP to fence to landtype, manage stream banks, perform biodiversity on-ground works and cropping systems improvements.

Humbolt & Cona Creeks

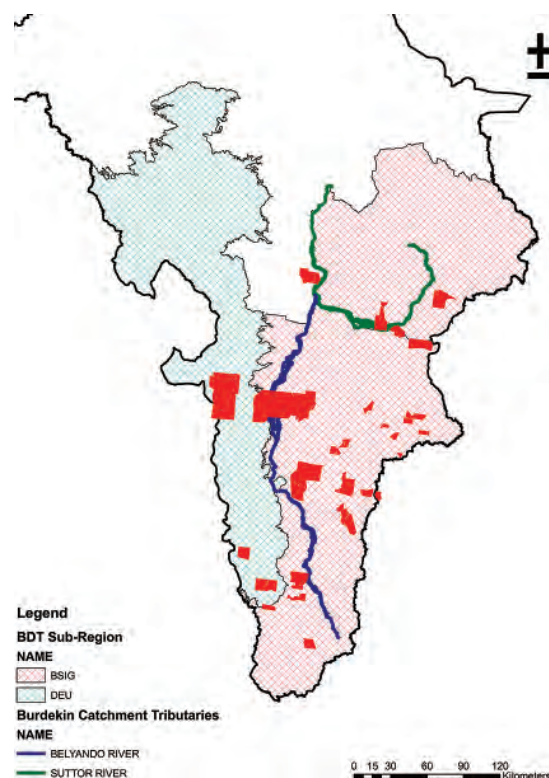
Landholders invested an extra 164% of the \$395 605 CHRRUP provided for improving sustainable agricultural practices. Fencing to landtype, and fencing creek beds, biodiversity stewardships and the provision of planning software contributed to whole of catchment improvements.



BELYANDO SUTTOR PROJECT PARTICIPANTS

Belyando-Suttor Catchment

CHRRUP in partnership with BDT NRM has invested \$535 414 in the Belyando-Suttor catchments. Over 65 projects were contracted on 30 properties covering 413 018 hectares. There were significant strategic weed control projects and a high uptake of fencing to landtype projects.



CHRRUP works in partnership with

